



# GMT MONTHLY MEMBERSHIP PROGRESS REPORT

Results as of: 3/31/2024

Multiple District 13

LOCATION: OHIO

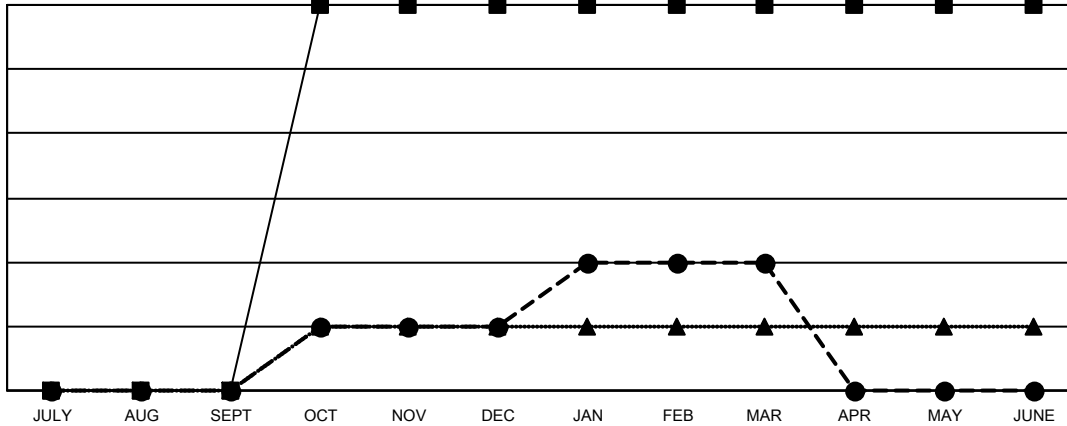
GMT: OPEN

GMT CA 1

Clubs			
RESULTS FOR 2023-2024			
QUARTER	NEW CLUB GOAL	NEW CLUBS	DROPPED CLUBS
JULY/AUG/SEPT	0	0	5
OCT/NOV/DEC	6	1	2
JAN/FEB/MAR	0	1	1
APR/MAY/JUNE	0	0	0

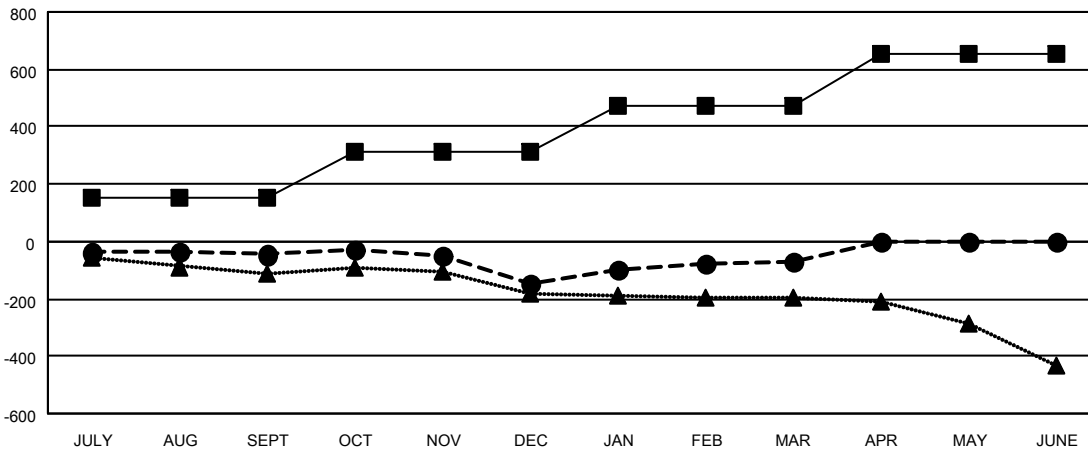
Members			
RESULTS FOR 2023-2024			
QUARTER	MEMBER GROWTH NET GOAL	MEMBER GROWTH ACTUAL	DROPPED MEMBERS ACTUAL (including transfers)
JULY/AUG/SEPT	150	221	236
OCT/NOV/DEC	162	231	317
JAN/FEB/MAR	160	301	201
APR/MAY/JUNE	184	0	0

GOALS AND ACTUAL NEW CLUBS CUMULATIVE



- - CURRENT YEAR GOALS FOR NEW CLUBS
- - CURRENT YEAR ACTUAL NEW CLUBS
- ▲ - LAST YEAR ACTUAL NEW CLUBS

GOALS AND ACTUAL MEMBERS CUMULATIVE



- - MEMBER GROWTH NET GOAL
- - MEMBER GROWTH ACTUAL
- ▲ - LAST YEAR MEMBERSHIP ACTUAL

DROPPED CLUBS: 8	
<b>DROPPED MEMBERS</b>	
DECEASED	137
CLUB CANCELLED	7
OTHER	610
<b>TOTAL</b>	<b>754</b>

190 CLUBS OF 361 ADDED 1 OR MORE NEW MEMBERS

GENDER DISTRIBUTION	
MALE	6,588 (67.92%)
FEMALE	3,112 (32.08%)

[CLICK HERE FOR CUMULATIVE MEMBERSHIP DATA](#)

TOTAL FAMILY UNIT MEMBERS	2,022
FAMILY MEMBERS PAYING HALF DUES	1,028